

Customer :

customer

Customer part :

customer part

Comment :

Comment

S1=0.59

S2=0.98

Tmax=444

Tp S2=483.0

PI=0.38

HI=98

Sample =1805.8

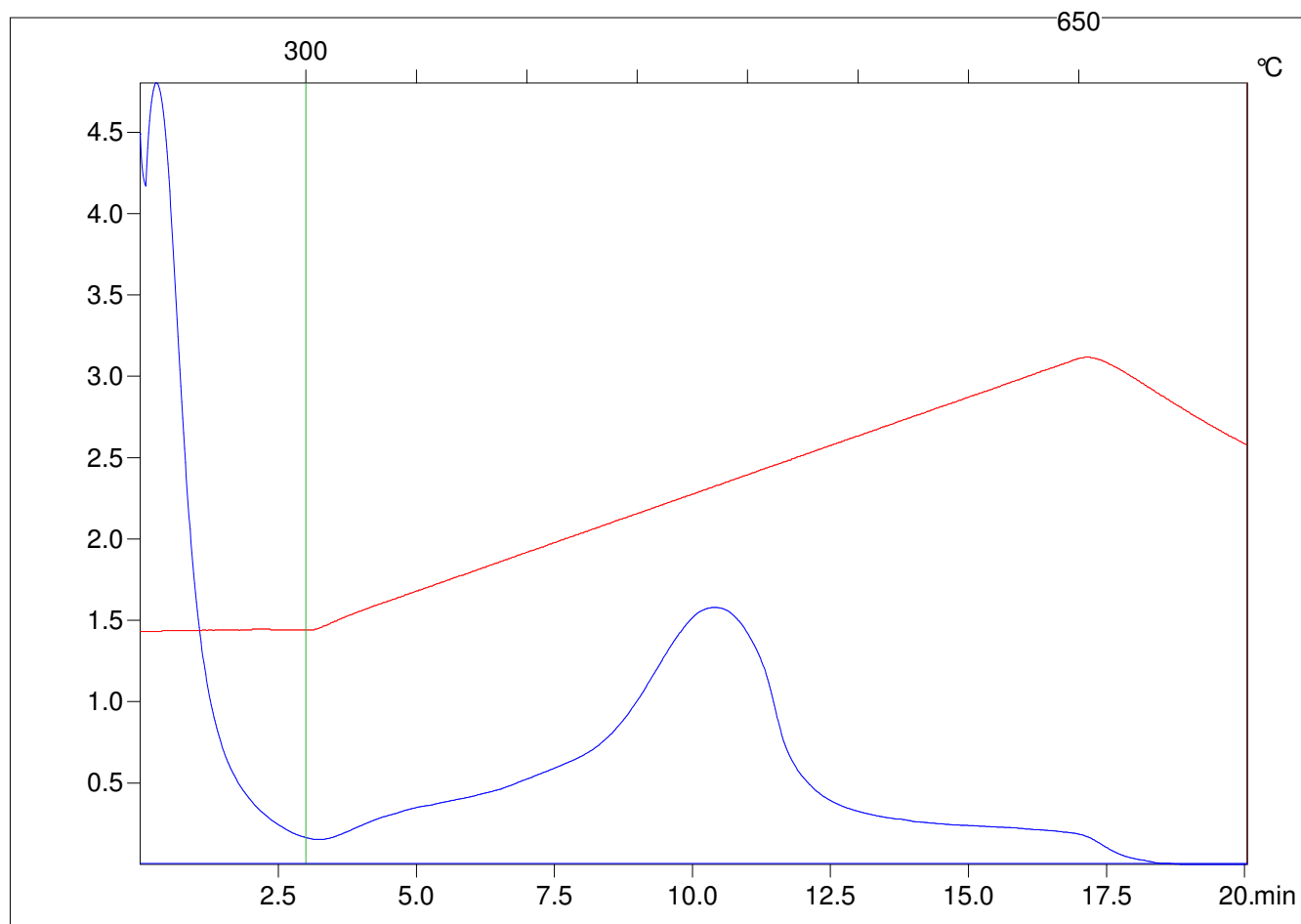
Method =Bulk Rock

Cycle=Basic

KFID(10*9)=1444

Qty =70.0

TOC=1



C:\VINC\PK4_1792\PK023.R00 : FID pyrolysis graphic

State

Pyro Status

Oxi Status